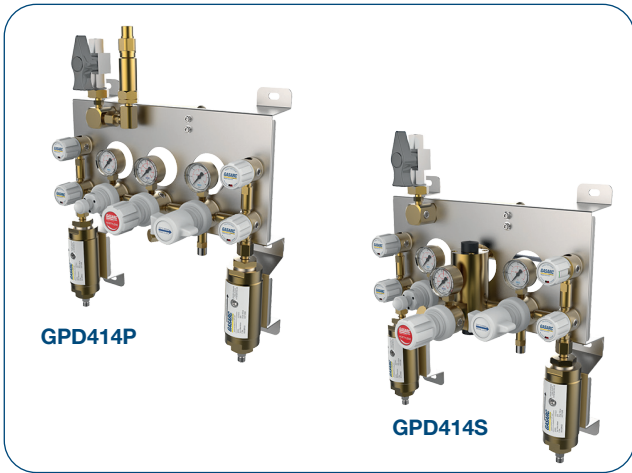




Tech Master GPD414 Series

4.5 Purity Two Stage Twin Cylinder Differential Autochange Gas Control Panel for Acetylene



The Tech Master GPD414 Series two stage twin cylinder control panels are designed for primary pressure gas control of technical grade Acetylene gas up to 4.5 purity (99.995%), on applications where constant delivery pressure is required as the cylinder pressure decreases.

- **GPD414P** Series | Two Stage Twin Cylinder Differential Autochange Control Panel - Acetylene - Pipeline Pressure Relief Valve
- **GPD414S** Series | Two Stage Twin Cylinder Differential Autochange Control Panel - Acetylene - Slam Shut-Off Valve

★ FEATURES

- Low & high pressure isolation valves
- High pressure line purge valve
- Twin cylinder configuration
- Automatic quick acting shut-off device
- Flashback arrestor

🔧 MATERIAL

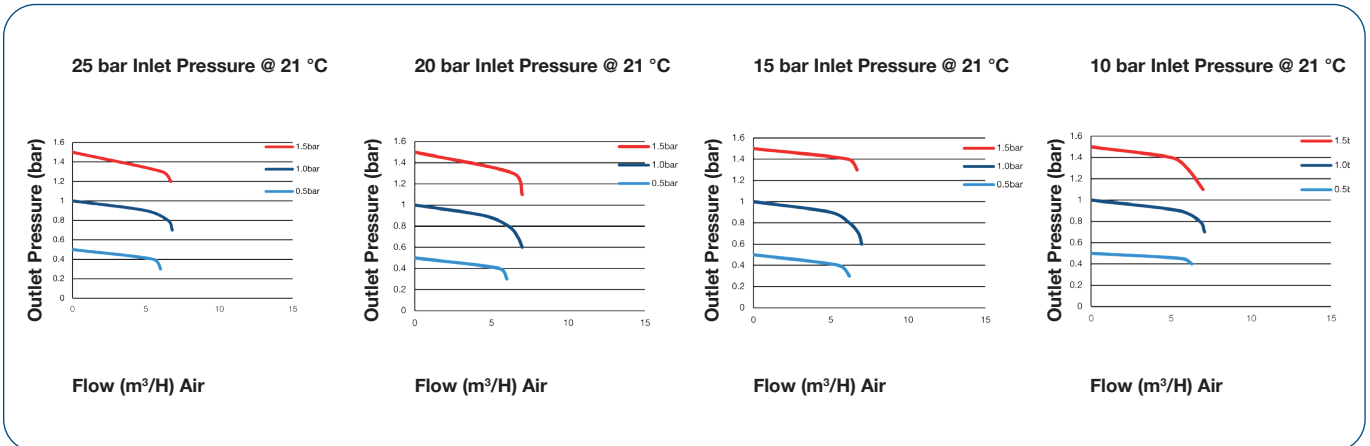
| | |
|-------------|----------------------------------|
| ■ Body | Brass Barstock |
| ■ Bonnet | High Strength Alloy |
| ■ Diaphragm | Polychloroprene (Neoprene®) (CR) |
| ■ Seat | Polyurethane |
| ■ Filter | 10 Micron 316L Stainless Steel |

👍 SPECIFICATION

- **Maximum Inlet Pressure** 25 bar (360 PSI)
- **Delivery Pressure Range** 1.5 bar (22 PSI)
- **Gauges** 50mm (2") Diameter
- **Ports** 1/4" NPT Inlet / 1/2" BSP Outlet
- **Temperature Range** -20° C to +60° C (-4° F to +140° F)
- **Weight** **GPD414P** 16.62 kg (36.64 lbs) ****
GPD414S 19.05 kg (42.00 lbs) ****
- BS EN ISO 14114 Compliant
- BS EN ISO 15615 Compliant (Safety Devices Only)

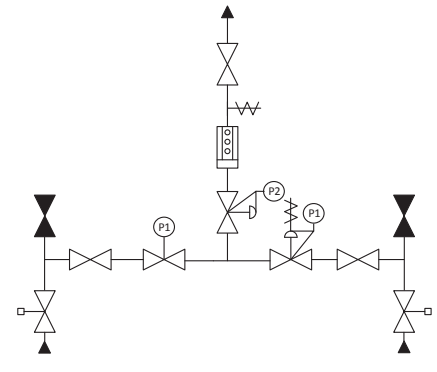
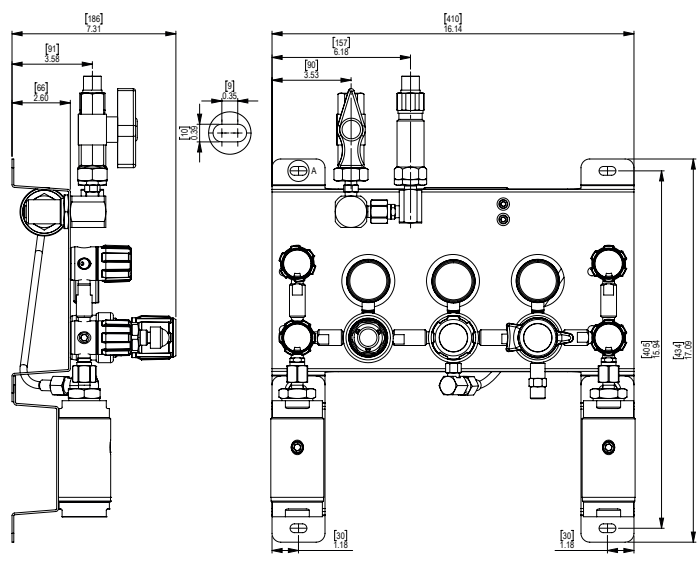
**** Subject to final configuration

✓ FLOW PERFORMANCE



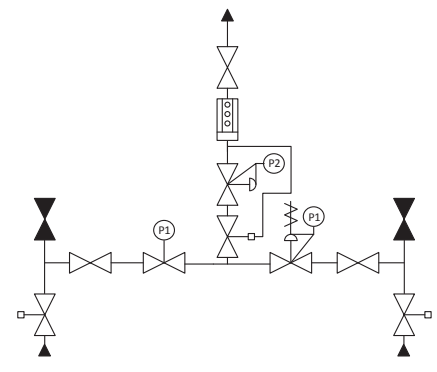
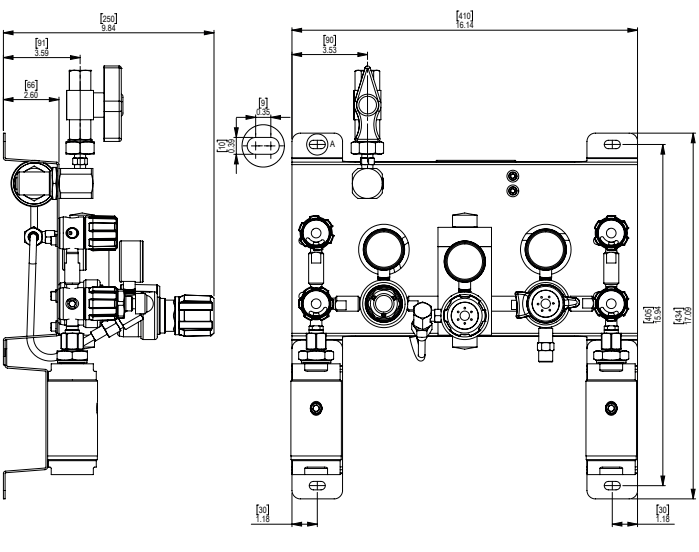
DRAWINGS

GPD414P



- P1- Pressure Gauge
- Automatic Quick Acting Shut-off Valve
- Purge Valve (closed)
- Isolation Valve
- Adjustable Pressure Regulator with P2 Pressure Gauge
- Flashback Arrestor
- Pressure Relief Valve

GPD414S



- P1- Pressure Gauge
- Automatic Quick Acting Shut-off Valve
- Purge Valve (closed)
- Isolation Valve
- Adjustable Pressure Regulator with P2 Pressure Gauge
- Flashback Arrestor
- Pressure Sensitive Shut-off Valve

MODEL NO. SELECTOR GUIDE

Example for a Model No. for GPD414 Series

| Product Type | Inlet Pressure Bar [PSI] | Outlet Pressure Bar [PSI] | Inlet Pressure Gauge | Outlet Pressure Gauge | Inlet/Cylinder Connection | Outlet Connection | Options |
|--------------|--------------------------|---------------------------|--------------------------|-----------------------|---------------------------|-----------------------|--|
| GPD414P- | 01 25 [360] | 02 0 to 1.5 [22] | 01 bar/PSI | 01 bar/PSI | 000 1/4 NPT Female | 76 1/2" BSP Female RH | A No Options Selected |
| GPD414S | | | 02 bar/PSI Contact Gauge | | 089 1/4 BSP Male RH | | K Certificate of Conformity P Calibration/ Pressure Test Certificate X Special Instruction |